



SEE THE BIG
REVEAL™

Dental Fluorescence
 Loupes and Headlight System

Patent # US10215977B1

“Light up” the oral cavity like never before

Designs for Vision’s ground breaking **REVEAL™** utilizes a fluorescence activating headlight with specially filtered loupes to provide hands-free Fluorescence Enhanced Theragnosis™ (FET™). FET provides the visual information to support decision making and facilitate proper treatment options. Contact us for a demo to see REVEAL at work in:

CARIOLOGY

Identify enamel demineralization and bacterial contamination
 Distinguish between infected and affected dentin
 Insurance reimbursement code D0600:

ORAL HYGIENE

Detect supra- and subgingival infected calculus

PERIODONTOLOGY – IMPLANTOLOGY

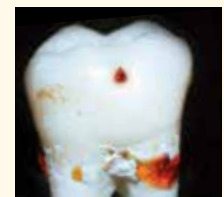
Identify accumulation of perio-active bacteria

RESTORATIVE DENTISTRY

Actively visualize and differentiate tooth structure and presence of dental restoration



CARIOLOGY



ORAL HYGIENE



IMPLANTOLOGY



Visit [DesignsForVision.com/REVEAL.htm](https://www.DesignsForVision.com/REVEAL.htm) to learn more about REVEAL’s Fluorescence Enhanced Theragnosis™ (FET™). Contact us to see the Visible Difference® with an in-office demonstration.



Designs for Vision, Inc.

4000 Veterans Memorial Hwy. • Bohemia, NY 11716-1024 • 1.631.585.3300

1.800.345.4009 • info@dvimail.com • [DesignsForVision.com](https://www.DesignsForVision.com)

® [f](#) [i](#) [t](#) [i](#) @Designs4Vision